

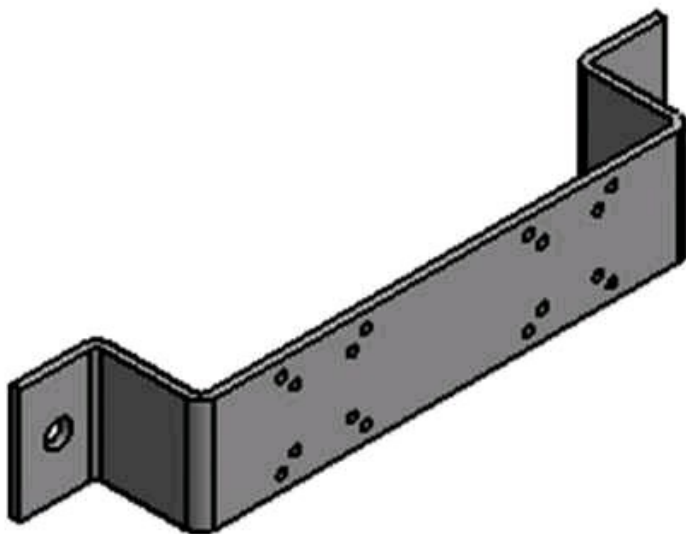
BA2CTVT-W

by CMC

Catalog ID: BA2CTVT-W

Brackets for 2 CT's or 2 VT's

- Designed to be put on wall, pole, or riser with one or two mast clamps
- CT-W Bracket will fit standard four-hole current transformers with two-hole base plate
- Brackets for 2 CT's or 2 VT's
- Material: .190" x 3" Aluminum



Product Details

General

Material	Aluminum
UPC	192663124350